

Implant Supported Porcelain

(Continued from Page 2)

Third Appointment (at least 5 working days needed from the second appointment)

Try-in: We will have either denture teeth or a PMMA teeth to try in. Evaluate the bite, shape, shade, location of teeth, and amount of tissue display. Look

at midline, and check phonetics. This may take multiple times to get everything correct, which is why we need five working days in the lab for each correction and try in.



Continuing Education

- Frank Spear Course in Scottsdale, AZ; John Treasure 2013/2014, Cresta Albertson 2014
- 3Shape Scanner Training in Troy, MI; Brett Memmott, Steve Parks
- DSG/Affiliate Annual Meeting in Tempe, AZ; Josh Brizzee 2013/2014, Steve Parks 2013/2014, Jonathan Fleming 2014, Clint Hall 2013
- “Master Press Technology with Matt Roberts” in Sarasota, FL; Cresta Albertson, Clint Hall
- Dental Lab Owners Business Association Annual Meeting in Boston, MA; Sheri Hamberlin
- Edentulous Implant Treatment Planning with David Cassagrande in Idaho Falls, ID; John Treasure, Kathy Hanni, Brett Memmott, Steve Parks, Jeremy Wright, Adam Hunter
- Cementation Options with Micky Stewart in Idaho Falls, ID; John Treasure, Cresta Albertson, Brett Memmott, Steve Parks, Clint Hall, Adam Hunter
- Nobel Biocare All-on-4 Training in Yorba Linda, CA; John Treasure
- “Intro to Dentures with Tom Wade” in Sarasota, FL; Kathy Hanni
- AACD Annual Meeting in Seattle, WA; John Treasure
- “The Art and Science of Giving Life to your Ceramics with Brad Jones” in Boise, ID; MaryBeth Holverson, Jeremy Wright
- “Master Dentures on Implants with Tom Wade” in Sarasota, FL; John Treasure, Kathy Hanni, Brett Memmott
- Chicago Midwinter in Chicago, IL; John Treasure, Adam Hunter, Jeremy Wright, Adrian Eames
- Nobel Biocare Scanner Training in Yorba Linda, CA; Brett Memmott, Steve Wright

Fourth Appointment (at least 10-15 working days needed from the third appointment)

We reverse engineer from the denture teeth and setup the fabrication of the titanium or zirconium implant substructure. We set the teeth in wax on the substructure and do another try-in to verify passive fit of framework and double check the bite, shape, shade and location of teeth.

Once happy, we go to the final appointment....

Fifth Appointment (at least 5 working days needed from the fourth appointment)

Delivery of final Prosthesis! Torque to manufacturer’s recommended settings.



Please keep the model work for any further work needed on the case, like retreading, because dentures last approximately 7 years.

Please call if you have any questions.



3735 Washington Parkway
Idaho Falls, ID 83404
800-325-5244 • 208-524-1888
www.treasuredental.com



Treasure Dental Lab offers handcrafted work performed by our talented technicians in all the following areas:

- ALL-PORCELAIN / COMPOSITE
- LAVA™ Hand Stack Crown/Bridge
- LAVA™ CZR Press Crown/Bridge
- LAVA™ CZR Press Inlays/Onlays
- Zirkonzahn Zirconia Crown/Bridge/Implant
- Authentic Veneer
- Authentic Crown
- Authentic Inlay/Onlay
- IPS e.max Veneers
- IPS e.max Crowns
- IPS e.max Inlays/Onlays
- IPS Empress Veneers
- IPS Empress Crowns
- Noritake Refractory Veneer
- Sinfony Composite Inlay/Onlay
- Sinfony Composite Temporaries

- PORCELAIN-TO-METAL
- Crown/Bridge
- High Noble Yellow Gold
- Precious High Noble Alloy
- Non-Precious Base (Tilite)
- Porcelain Margins

- GOLD
- High Nobel 60% Yellow Gold
- High Nobel 40% White Gold
- High Nobel 77% Inlay/Onlay
- Noble Yellow/Rose Gold

- IMPLANTS: ALL SYSTEMS
- Hybrid Dentures

- DIGITAL IMPRESSIONS
- Itero by Cadent
- Lava COS by 3M

WE ARE PROUD TO BE A
“MADE IN AMERICA”
BUSINESS.

Treasured News Bites

Spring/Summer 2014

Implant Supported Full Arch Restorations

Treasure Dental Lab is excited to offer more options for restoring your patient’s smiles.

We now offer state-of-the-art screw retained hybrid dentures and attached bar removable overdentures. These are two great economically priced restorations that look great and will provide your patients with a quality of life that dentures lack. The embarrassment caused by dentures moving during social interactions and the constant pre-occupation with attempts to stabilize them leaves the majority of patients dissatisfied. You can offer your patients the benefits of implant supported dentures that will improve their ability to eat like they used to with their original teeth. It will also improve their speech, esthetics, function, and self esteem.

We have partnered with two of the best companies in the business, Ivoclar and Nobel Bio-Care, to help in the fabrication of these restorations. We have been through extensive training over the last year to learn the best and most reliable

methods to make these beautiful, long lasting restorations. We feel we have a good understanding from start to finish to insure a successful outcome. We are using Ivoclar’s Ivobase to fabricate the denture. It is a new technique of pressing PMMA for the densest acrylic to date. This means outstanding accuracy, strength, and least amount of plaque accumulation. This in conjunction with Ivoclar’s premium teeth, Blue Line and Phonares II, make this a second to none hybrid denture.

Using NobelProcera CAD software, we are able to reverse engineer a custom milled titanium implant bar that is compatible with most implant companies out there. The accuracy and fit of these bars is very precise and we engineer them to provide the optimal support for the acrylic and teeth.

There are two options for bar design in screw retained hybrid dentures: full wrap bars, where acrylic wraps all the way around the bar; and the Montreal bar,



Implant Supported Porcelain or Hybrid Denture Full Arch Bridge

Pre-Planning: Most effective if done before implants are placed

In order to achieve the best results, a lot of pre-planning needs to go into restoring full arch implant cases.

We at Treasure Dental Lab are here to assist you every step of the way. We can help you digitally design your case with Nobel Clinician.

A CBCT scan with a scan appliance is used to help determine the optimal placement of the implants according to the patient's bone thickness and density. We can provide a semi-precision guide or a precision Nobel Guide for the placement of the implants.

One of the most important steps in planning is the inner arch space. This needs to be evaluated to determine our restorative options. Hybrid dentures and overbar dentures need 12 to 15mm of inner arch space (from tissue to opposing occlusion). Porcelain needs 8 to 12mm.

We can duplicate their existing denture to help determine inner arch space and help with the bite relation. Next we need to determine the transition line (where the prosthesis meets the tissue). If tissue is present, a cement over or screw retained porcelain bridge would be recommended.

If doing a hybrid denture, the transition line should be 3mm above their fullest smile to hide the difference in the patient's tissue color and the pink acrylic color. An alvelectomy may be needed to gain more restorative

space or to move the transition line. Next we need to determine if lip support is needed. If so, we may need to do an overbar denture with a flange to support the lip.

When the planning is complete and implants are ready to be placed, we offer the chair side conversion of the patient's existing denture or our interim denture for the teeth in a day concept.

Multi-unit abutments may be needed to correct the angulation of the implant and to allow for proper draw of the bridge and to make sure the screw holes come out on the occlusal or lingual.

Once the implants are fully integrated and you are ready to restore, here is the sequencing and time involved (most cases will take two months to restore):

First Appointment

Open Tray Implant Level Impression: Provide the lab with the lab analogs.

Second Appointment

(a least 5 working days from first appointment)

Verification Jig: To make sure the impression is accurate (should fit passively), you need to x-ray to verify. If it doesn't fit, cut, duralay and take a new open tray impression with jig in place.

Bite Rim: We will provide a



screw retained bite rim to help determine the proper bite and achieve the proper placement of



the teeth. Use the conventional denture technique to determine proper lip support, mark the midline, mark the incisal length where the central should be, and mark the corners of the mouth.

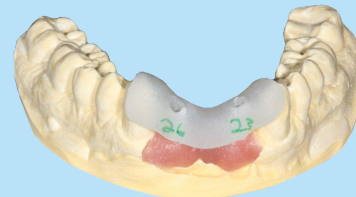
(Continued on Page 4)

IMPLANT ABUTMENT PLACEMENT JIG

In an effort to make implant abutments easier and more predicable to seat, we are providing a placement jig with each case.



This opaque white jig will help insure the proper position of the abutment. You place the abutment in the jig, place it in the mouth, and



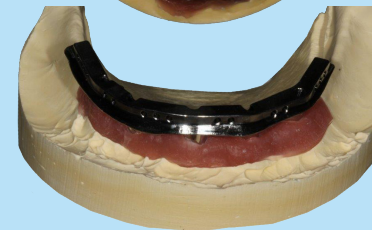
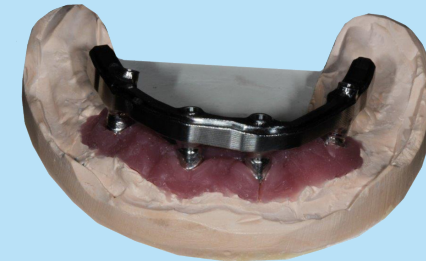
screw it in.

It rests on the adjacent teeth to hold it in place, making it quick and easy to seat.

Implant Supported Full Arch Restorations

(Continued from Page 1)

where we leave highly polished milled titanium on the underside of the bar to make it very



hygienic and easy to clean.

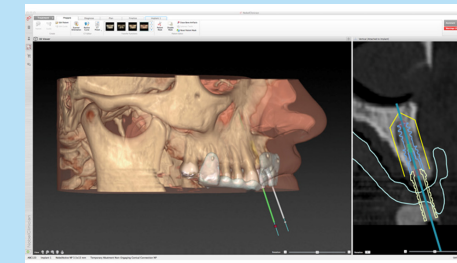
We offer three options for the bar design with overdentures: free form bar with locators or ball attachments, Paris bar with locators or ball attachments, and a Precision bar with locking pin attachments.



All the bars we fabricate through Nobel are backed by a five year factory warranty.

These hybrid dentures make a great restorative material for the ALL-ON-4 technique.

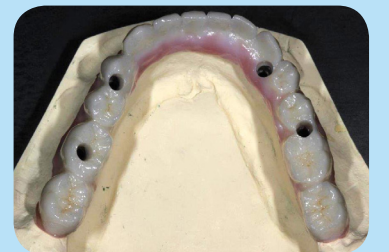
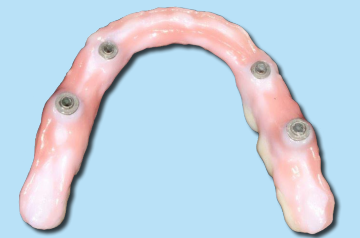
We now offer case planning and guided implant surgery through the use of Nobel Clinician. Using the CBCT scan,



we import this into the software to design the best placement of the implants according to the amount of bone. We can provide a surgical stint, called Nobel Guide, to insure proper placement of the implants. We can provide a scan appliance for the CBCT scan and the parameters needed to achieve this. We can also provide the teeth in a day concept by providing an interim denture that can be converted to the implants on the day of placement as long as the implants have a torque value of 35 Ncm or can be worn as a conventional denture during the integration phase.

For our local doctors, we offer the chair side conversion of the patient's existing denture or our interim denture for the teeth in a day concept.

For those full arch implant patients who want the very best, we offer the Pro-Emax bridge. This is a combination of custom milled titanium bar with Emax crowns cemented to it with pink tissue, to provide the ultimate in



esthetics.

For those implant patients that are bruxers and hard on their teeth, we can do a ZirkonZahn Bridge where we leave all the posterior teeth and the lingual and incisal of the anterior teeth in the strong monolithic material and only layer the facial of the anterior teeth to provide nice esthetics.

Welcome Home

Barry & Diane Treasure have returned from serving an 18-month mission for their church in Hong Kong, China.

Welcome to Mikaela Johnson who started working part-time in our Model and Die Department in April 2013 and has been a great addition here.

Congratulations!

Cresta Albertson celebrated her 20 year milestone lab anniversary in April of 2013.