

# BadAZ (All Zirconia)

The New, Very  
Translucent Zirconia



Sometimes a product comes along that looks so good it deserves its own name, BadAZ. We are excited to add BadAZ to our product line. It is a new, very translucent Zirconia that can be used anywhere in the mouth.

It has the look of IPS e.max, but is a Zirconia that is almost twice as strong as IPS e.max.

It is rated at 720 MPa and can be used from single crowns up to a 3 unit bridges.

For anterior cases, we will do a facial cut back and porcelain layer.

Posterior restorations will be left monolithic for strength.

BadAZ is highly biocompatible and can be conventionally cemented for ease of seat and clean up.

Due to its high translucency, please include the underline prepped tooth shade as it could affect the final color.

It also carries our outstanding 10 year warranty.

## Continuing Education

- Master Level II Denture course with Tom Wade in Sarasota, FL - Kathy Hanni; May 2014
- The 24th International Symposium on Ceramics in Hollywood, CA - John Treasure & Jeremy Wright; June 2014
- “Aesthetics with Klaus Mutertheis” in Irvine, CA - Adrian Eames; May 2014
- Cresta Albertson & Clint Hall; Sept. 2014
- “Master IPS e.max Technology” with August Bruguera in Sarasota, FL - John Treasure; Sept. 2014
- DLOBA Annual Meeting in San Diego, CA - Sheri Hamberlin; Sept. 2014
- Vision 21 Dental Meeting in Las Vegas, NV - John Treasure; Jan. 2015
- LMT Lab Days Midwinter Meeting in Chicago, IL - John Treasure, Adam Hunter, Jonathan Fleming, Steve Parks; Feb. 2015
- Advanced 3Shape Training in Idaho Falls, ID; Brett Memmott, Steve Parks, Adrian Eames
- “Art of Morphology Workshop” with Jessica Birrell in Las Vegas, NV - MaryBeth Holverson, March 2015
- AACD annual Meeting in San Francisco, CA - John Treasure, May 2015
- CAP Izir Training in Boston, MA - Josh Brizzee & Adrian Eames, June 2015
- “Gingival Esthetics for Dentures” in Sarasota, FL - Kathy Hanni, June 2015
- 3Shape Comprehensive Training for Partials, Model Builder and Implants in Warren, NJ - Brett Memmott, August 2015
- 360 Imaging Surgical Guide Training in Atlanta, GA - John Treasure, Steve Parks, Sept. 2015
- “Art of Morphology Hands-on Workshop” with Jessica Birrell in Idaho Falls, ID - John Treasure, Cresta Albertson, Kathy Hanni, Clint Hall, Jeremy Wright, Jonathan Fleming, Steve Parks, Josh Brizzee, Adrian Eames, Sept. 2015
- DLOBA Annual Meeting in Yorba Linda, CA - John Treasure, Oct. 2015



3735 Washington Parkway  
Idaho Falls, ID 83404  
800-325-5244 • 208-524-1888  
www.treasuredental.com



Treasure Dental Lab offers handcrafted work performed by our talented technicians in all the following areas:

ALL-PORCELAIN / ZIRCONIA & COMPOSITE  
Authentic Veneer/Crown  
Authentic Inlay/Onlay  
IPS E.max Veneers/Crowns/Bridge  
IPS E.max Inlays/Onlays  
IPS Empress Veneers/Crowns  
Noritake Refractory Veneer  
LAVA™ Hand Stack Crown/Bridge  
LAVA™ CZR Press Crown/Bridge  
LAVA™ CZR Press Inlays/Onlays  
Zirkonzahn Zirconia Crown/Bridge/Implant  
BadAZ All Zirconia  
Sinfony Composite Inlay/Onlay  
Sinfony Composite Temporaries  
PMMA Temporaries

PORCELAIN-TO-METAL  
High Noble Yellow Gold  
Precious High Noble Alloy  
Non-Precious Base (Tilite)

GOLD  
High Nobel 60% Yellow Gold  
High Nobel 40% White Gold  
High Nobel 77% Inlay/Onlay  
Noble Yellow/Rose Gold

IMPLANTS: ALL SYSTEMS  
360 Imaging Guided Surgery  
Hybrid Dentures  
Pro E.max Prosthesis Bridge  
Zirconia Prettau Prosthesis Bridge

DIGITAL IMPRESSIONS: ALL SYSTEMS  
Itero by Align Technology, 3M True Definition by 3M, Trios by 3Shape, Nevo by E4D Technologies, Cerec by Sirona, IOS Fastscan, CS 3500 Intraoral Scanner by Carestream

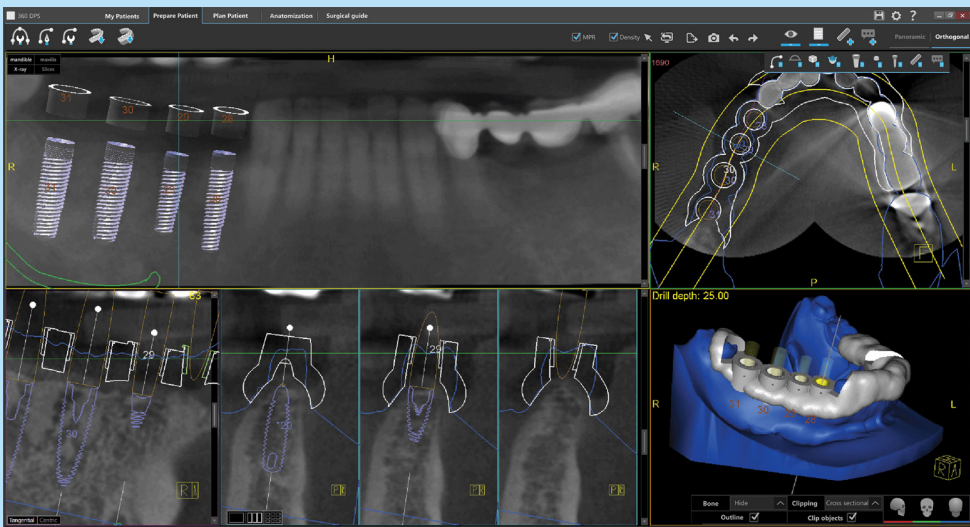


WE ARE PROUD TO BE A  
“MADE IN AMERICA”  
BUSINESS.

# Treasured News Bites

Winter 2016

## Simplifying Implant Placement Through Guided Surgery



We are excited to partner with 360 Imaging to provide guided surgery for all major implants.

From single implants to full arch implants, we are an authorized Dental Lab that will help you bring the digital revolution to your implants by providing the planning, placement, temporary and restorative restorations.

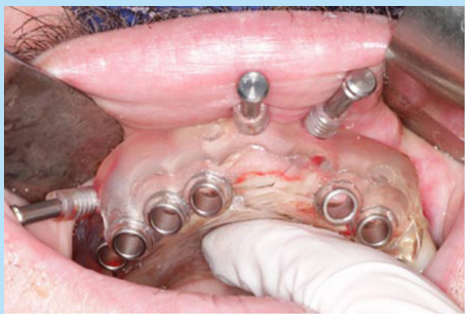
The beauty of working with Treasure Dental Lab and 360 Imaging is the ability to provide flapless guided implant placement where you can have a PMMA temporary already made before you even place the implant.

Using 3D CBCT scan data we can help you diagnose, plan, and perform dental implant rehabilitations with increased predictability, patient comfort and superior esthetic results.

Please contact us for scan proto-

cols to insure accurate information is obtained. For denture patients there are SureMark CT-Scan Markers that need to be placed before scanning.

Once a treatment plan is agreed upon, it can be accurately translated into a surgical template that is designed and ordered from their production facility in Atlanta, Georgia.



360 Guides facilitate safe, minimally invasive surgery that results in less patient pain, reduced swell-

(Continued on Page 2)



## Simplifying Implant Placement

(Continued from Page 1)

ing and shortened healing times.

### Increase Predictability and Safety

360Guide helps you to predictably transfer your treatment plan into clinical reality.

Complete information about the quality and quantity of the bone makes it possible for you to determine the ideal location for your patient's implants.

This will increase the probability for a successful operation. Knowledge of the exact location of important anatomy, such as the mandibular nerve and the maxillary sinus cavities, provide confidence that implant placement will proceed smoothly and safely.

Surgical guides help ensure that all of your patient's implants are properly placed using all of this valuable information.

### Reduce Implant Surgery Time & Costs

Once you start to utilize 360 software and a surgical guide, the time taken for the entire procedure of surgery will drastically come down.

Besides, you will minimize any future complications that might arise out of an implant surgery done since you have a thorough knowledge of your patient's anatomy.

Surgical Guides ensure that you get a detailed plan of the procedure and accurate realization of the different components involved.

Incidentally, you will start to treat more cases, which will lead to better case acceptance, which will lead to better results for your patients, which gives you more success with high-



er profit margins.

### Drilling Recipes are Included

Each 360Guide is delivered along with its own surgical protocol for Implant site preparation.

These recipe sheets based on your guided surgery kit will provide you with detailed information regarding proper drill sequence and tube adapter selection for the surgical preparation of each implant site.

## 360 Imaging Course

In November, we offered a 360 Imaging course. It was a success and very informative. We want to thank all those who were able to attend.

If you are interested in more info about Surgical Guides, please contact John at Treasure Dental Lab.



(ABOVE: From left to right)

Dr. Steven Boyle, Dr. Richard George, Dr. Ethan Moulton, Adam Hunter, Kory Rykman, Dr. Brad Oswald, John Treasure CDT, Dr. Curtis Godfrey, Dr. Doug Barnard, Dr. Kevin Mudrow, Dr. Scott Davis, Brett Memmott CDT, Dr. Galen Staley, Steve Parks CDT



## Preat Dynamic Abutment System

We can finally provide a screw retained restoration with an angled screw channel from Preat.

It allows us to correct angulation up to 30 degrees to strategically move screw access holes to more esthetic and functional positions.

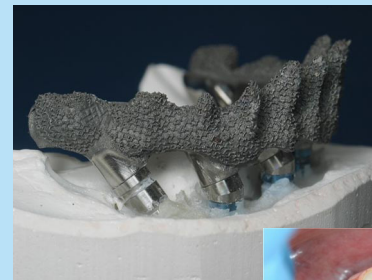
This allows us to make anterior screw retained restorations with all of our different restorative materials, opening the door to more restorative options.

The only thing you will need is Preat's Dynamic driver which we will send with your first case.

We can now do full arch Pro-Emax, Zirkon Zahn Pret-

tau bridges and hybrid dentures without multi unit abutments using the angled screw channel.

This makes restoring so much easier and less expensive.



## Humanitarian Project in Belize

BelizeMissionProject.com



John Treasure was able to participate in a humanitarian project to Belize where they made flippers for people missing their anterior teeth.

Their group also cleaned teeth, extracted teeth, did fillings, fluoridation, audiology, a health clinic, and donated food.

It was an amazing trip and John loved giving back to those in need.



Come join us next year!